

SOEW 13... MD

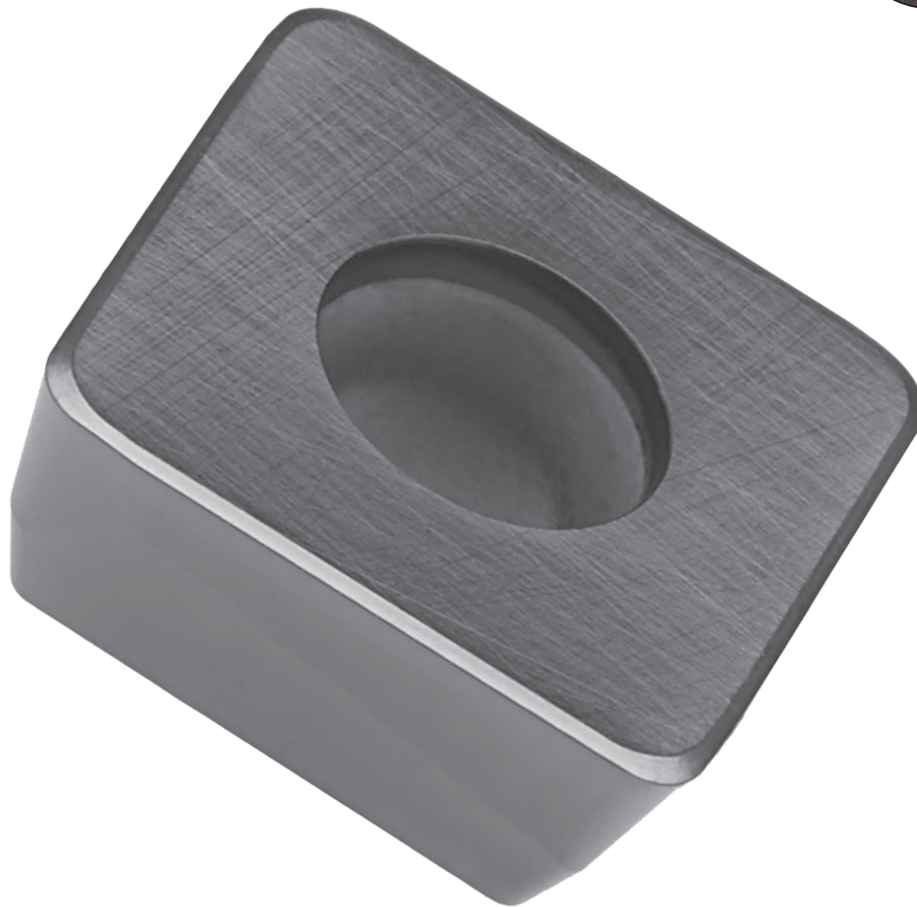
Improvement on Mold & Die milling



SOEW
13...MD

NEW

PHP
NEW
GRADE



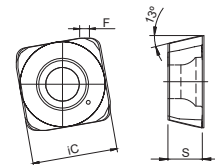
NOW AVAILABLE

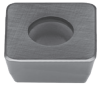
SINCE 1916

The new MD geometry comes with improvements such as:

- Reduced Cutting Force
- Reduced Heat Generation
- Greater Tool Life

Geometry	Application
GEOMETRY MD	General application
GEOMETRY S	Stronger edge preparation for unstable conditions and difficult to machine steels
GEOMETRY MS	First choice for stainless steel and HRSA

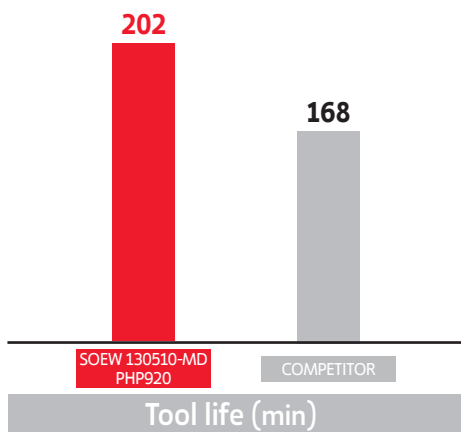


Inserts Pastilhas Plaquetas	(i) Geometry code	(2) Grade code ISO	P		M	K		S	Dimensions Dimensões Dimensiones (mm)				
			X5	T1	G6	X9	X5	T1	X9	IC	S	R	F
			PHP910	PHP920	PH740	PHH930	PHP910	PHP920	PHH930				
	1111906	SOEW 13M510 S	⊗	⊗	⊗		⊗	⊗		12,43	5,00	1,20	1,00
	1112813	SOEW 13M510-MD		⊗				⊗		12,43	5,00	1,20	1,00
	1112147	SOET 13M520-MS				⊗			⊗	12,43	5,00	2,00	-

TEST REPORT | Relatórios de Teste | Informe de prueba

Insert: SOEW 13M510-MD (ISO)

Grade: PHP920



Workpiece material: 1.2738 Steel (38 HRC)

Cutting speed: V_c	160 m/min
Feed per tooth: f_z	1,3 mm/tooth
Depth of cut: a_p	1,30 mm
Stepover : a_e	65%
Operation	Face milling
Coolant	Air